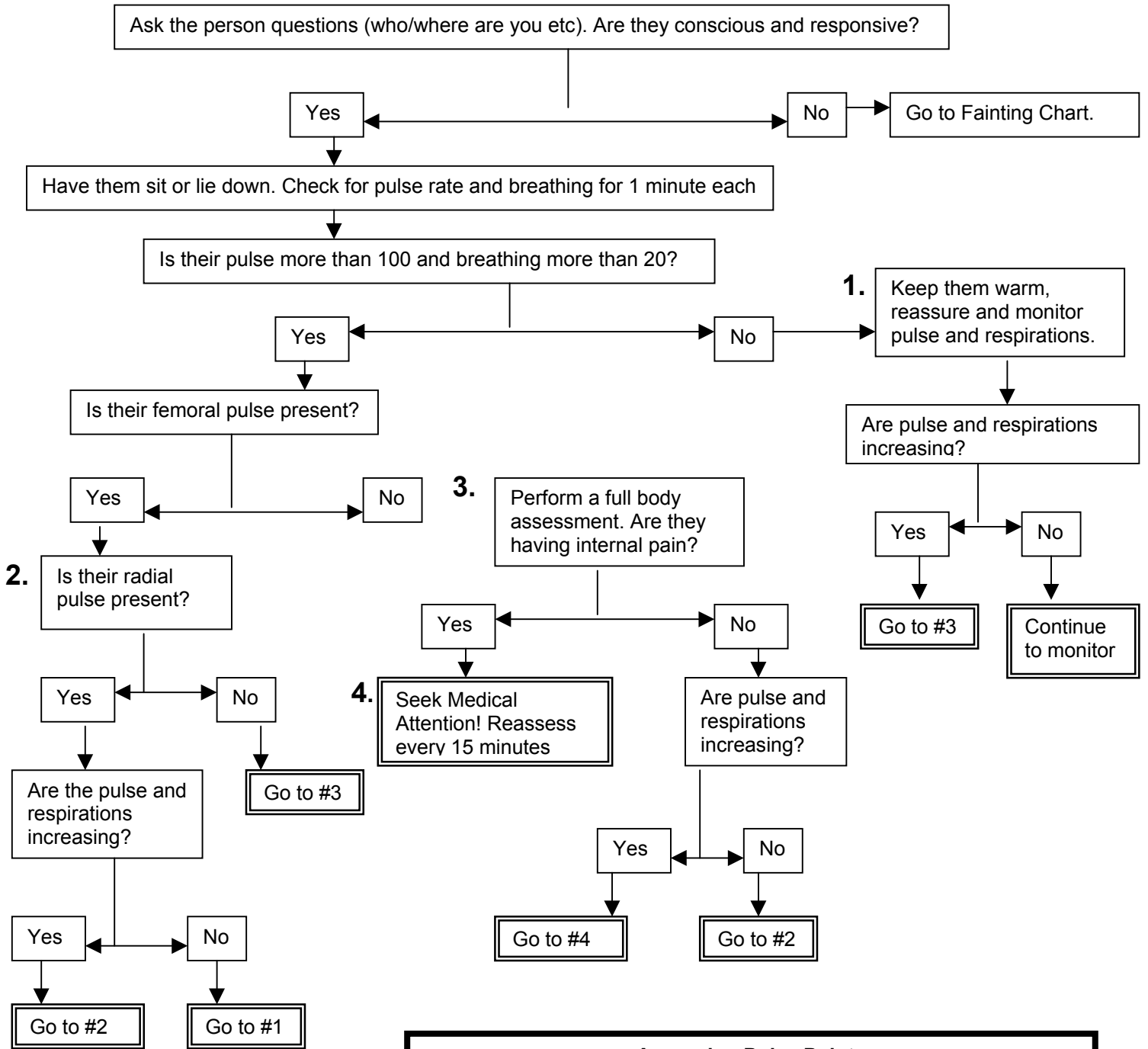


Shock Assessment



Assessing Pulse Points

Always use index and middle finger. Never use your thumb!

Carotid: Neck on either side of the trachea

Radial: on the wrist, straight down from the thumb

Femoral: in the inguinal canal. Top of thigh in the groin Difficult to find, so feel around!

Brachial (upper arm), popliteal (knee) and pedal (foot) pulses are difficult to assess and not used. Brachial pulse is used commonly in infants.