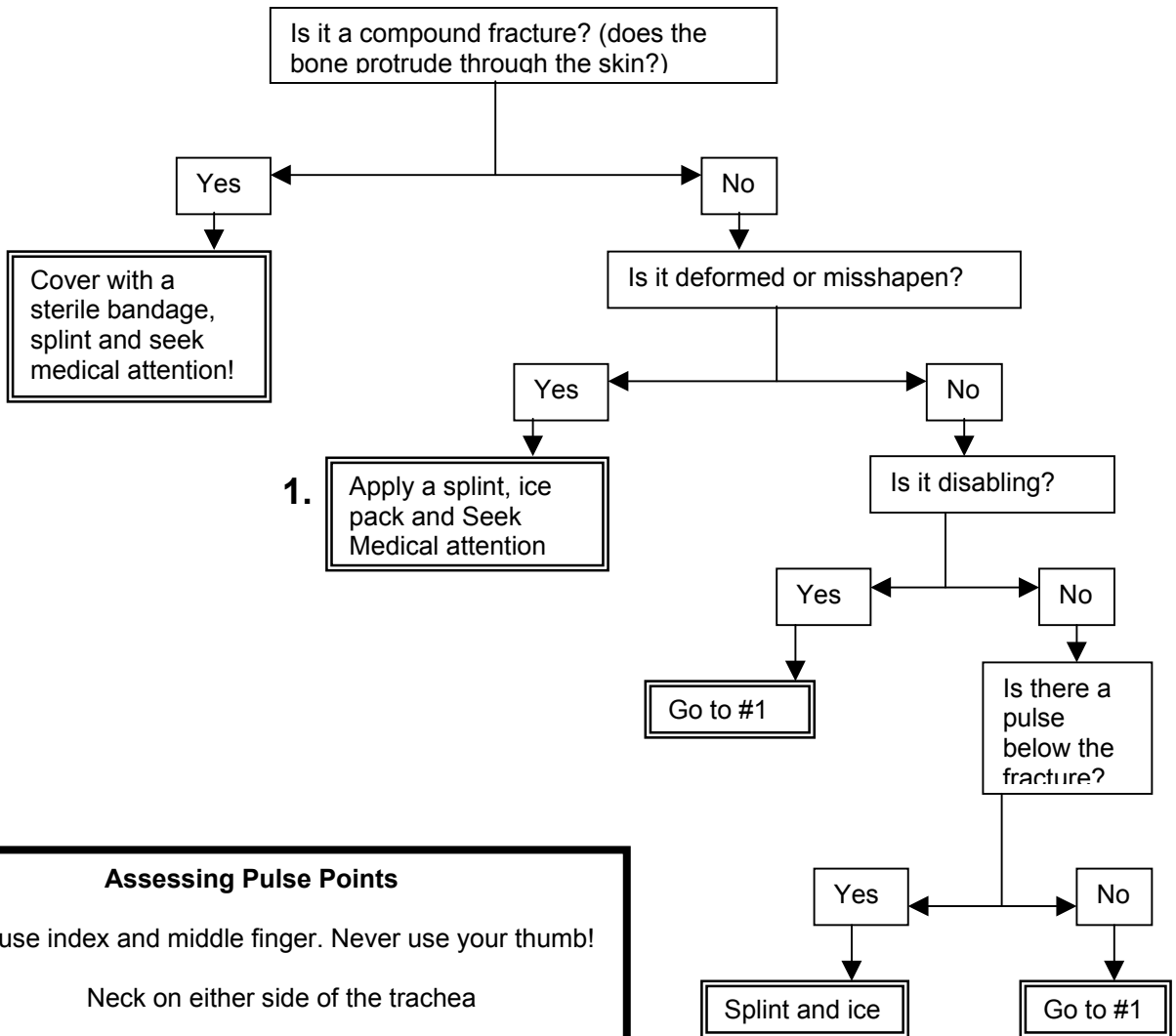


Fracture Assessment



Assessing Pulse Points

Always use index and middle finger. Never use your thumb!

- Carotid:** Neck on either side of the trachea
- Radial:** on the wrist, straight down from the thumb
- Femoral:** in the inguinal canal. Top of thigh in the groin. For upper leg fractures, use popliteal or pedal pulses.
- Brachial:** inner aspect of the upper arm about 2 inches above the elbow. For upper arm fractures, use radial pulse.
- Popliteal:** Inner aspect of the back of the knee
- Pedal:**
 1. Top of foot, directly up from second toe
 2. Inner ankle, above heel bone, behind Achilles tendon.